

PERSONAL LEARNING DEVICE (PLD)

@ PHSS

6 JAN 2024 (PARENT ENGAGEMENT)

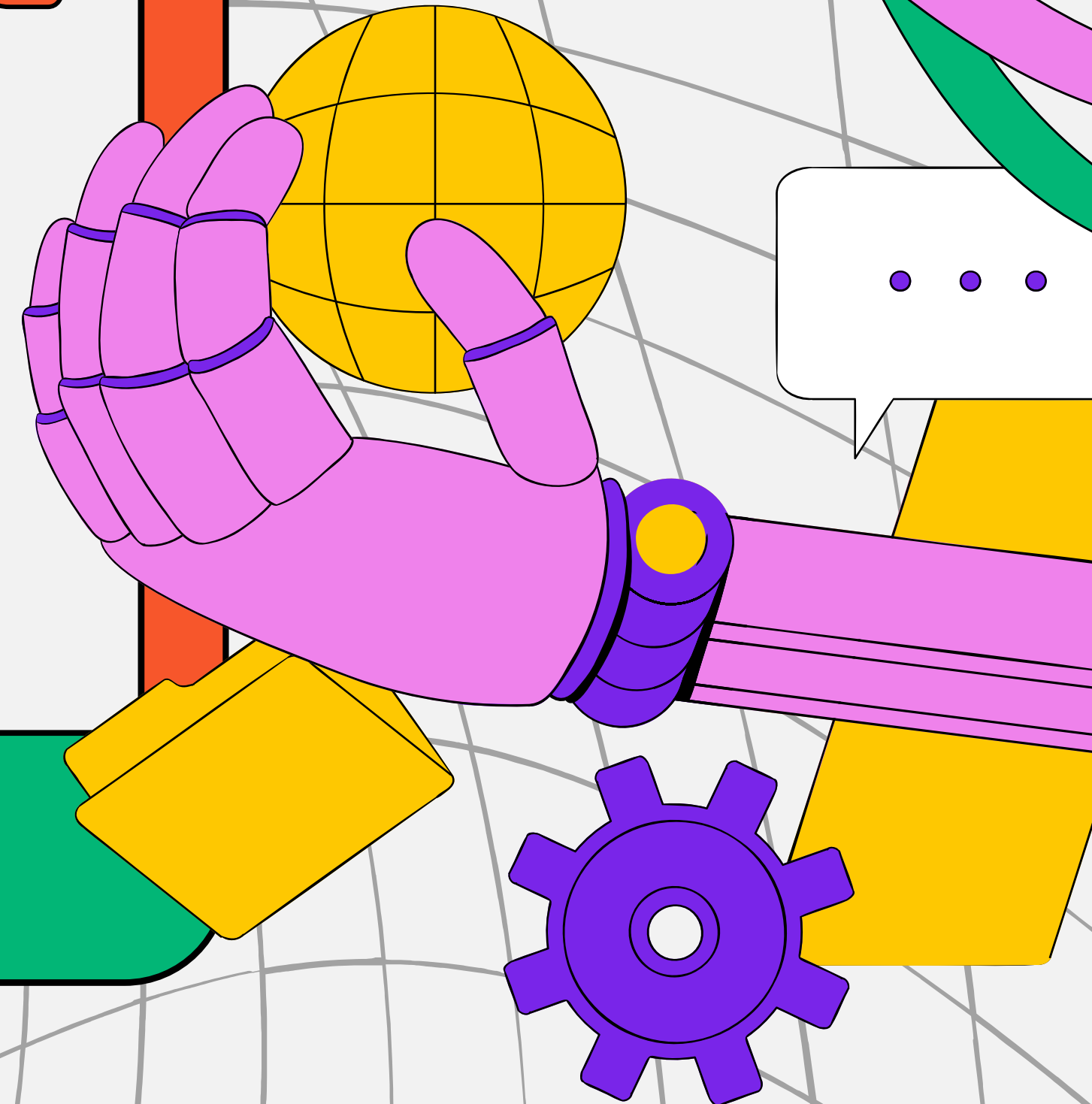


TABLE OF CONTENTS



01 Intended Outcomes

02 Device and Funding Information

03 What's next?



01

INTENDED
OUTCOMES

INTENDED OUTCOMES OF THE PLD INITIATIVE

**Support the
Development of
Digital Literacy**



**Support Self-Directed
and Collaborative
Learning**

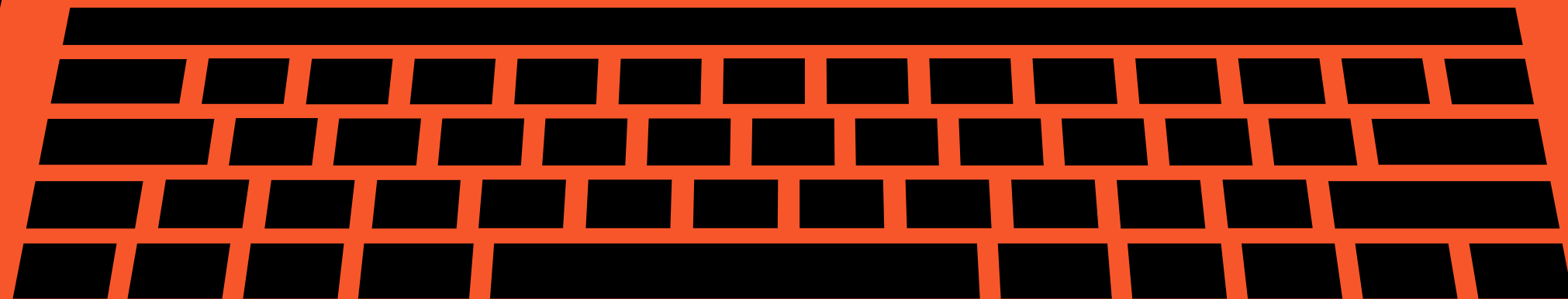


**Enhance
Teaching and
Learning**



02

DEVICE AND
FUNDING
INFORMATION



PERSONAL LEARNING DEVICE

Accessories

**Active Stylus
Pen**

RAM

**Upgrade
to 8GB**



Storage

**Upgrade to
128GB eMMC**

Processor

**Upgrade to
n200**

Acer TravelMate TMB311

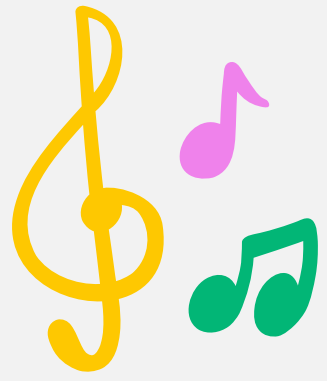
Price: \$639.80

(with GST and 3 year insurance coverage)

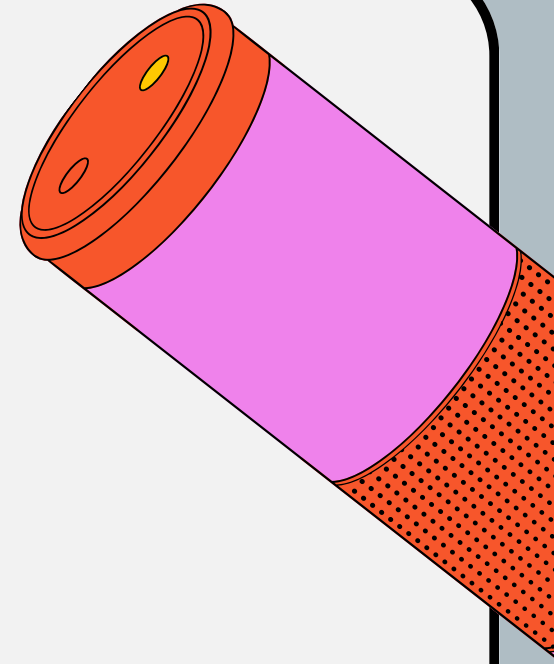
INSURANCE COVERAGE

The package includes a 3-year warranty, and 3-year insurance which includes:

Insurance Coverage	Claimable
<ul style="list-style-type: none">• Fire• Lightning• Power Surges• Accidental <u>e.g</u> water spillage, drop <u>etc</u>• Theft due to forcible entry• Robbery <p>* Accidental loss will not be covered by insurance.</p>	2 repairs or 1 replacement (3-year insurance)



WHAT IS INCLUDED?



Acer TravelMate Spin

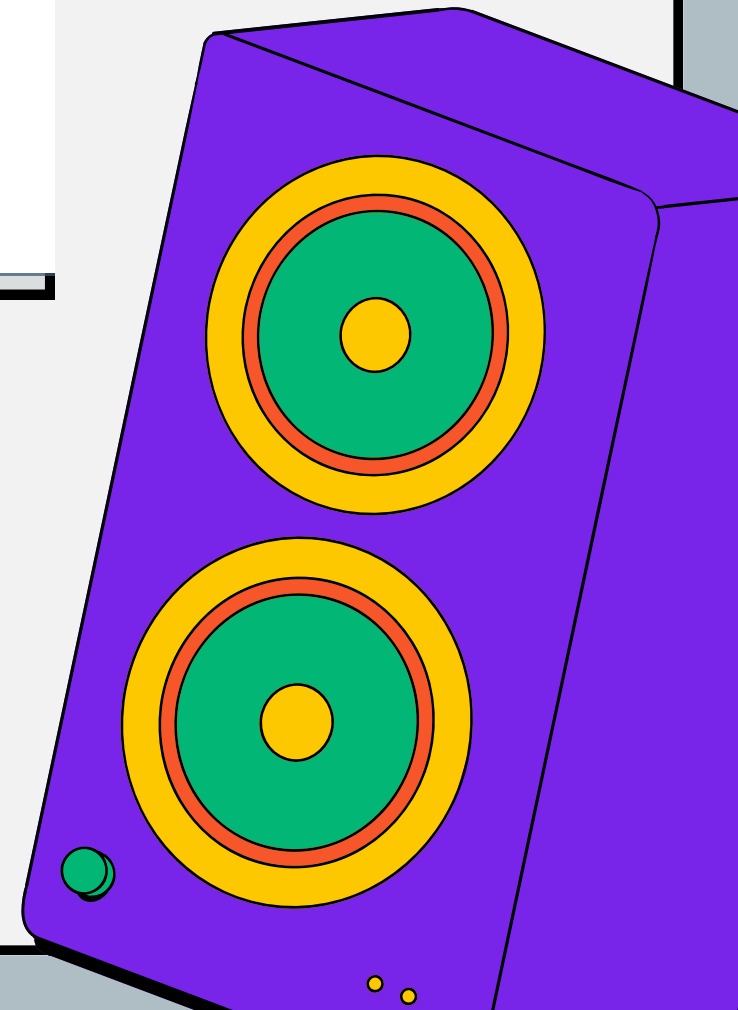
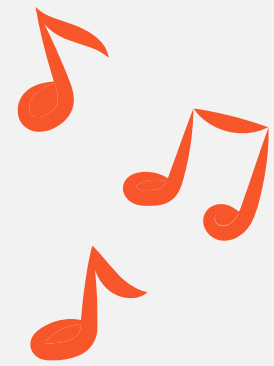
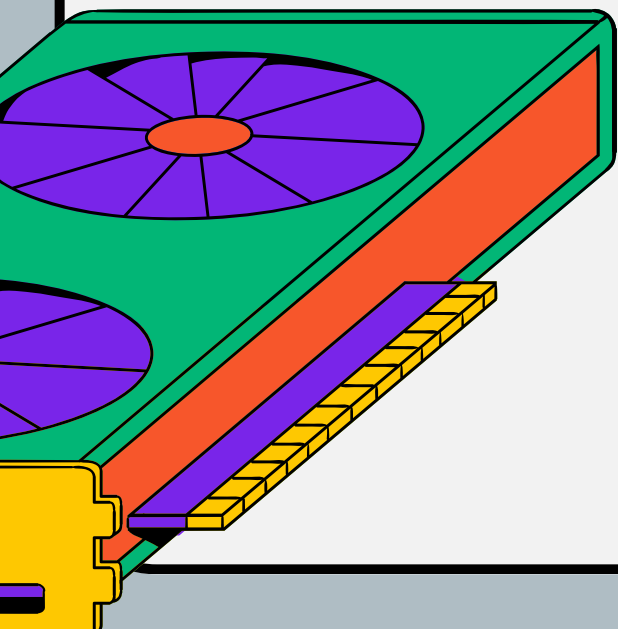
with Power Adapter and carrying case



Stylus



USB Mouse



FUNDING SCENARIO FOR SC

Student A (SC on MOE FAS)
GHI ≤ \$3,000 or PCI ≤ \$750

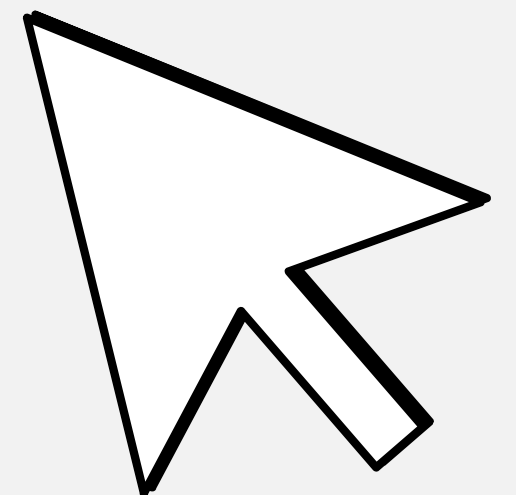
Device Bundle Cost	\$639.80
Student Subsidy	\$320 (rounded up to nearest 10 cents)
Available Edusave Balance <i>(After setting aside for 2nd-tier misc fees)</i>	\$200.00 before deduction \$200.00 will be deducted
Additional Subsidy	\$119.80
Cash Out-of-pocket	\$0.00

Student B (Non MOE-FAS SC from lower income family)
\$3,000 < GHI ≤ \$4,400 or \$750 < PCI ≤ \$1,100

Device Bundle Cost	\$639.80
Student Subsidy	\$191.90 (rounded up to nearest 10 cents)
Available Edusave Balance <i>(After setting aside for 2nd-tier misc fees)</i>	\$200.00 before deduction \$200.00 will be deducted
Additional Subsidy	\$197.90
Cash Out-of-pocket	\$50.00

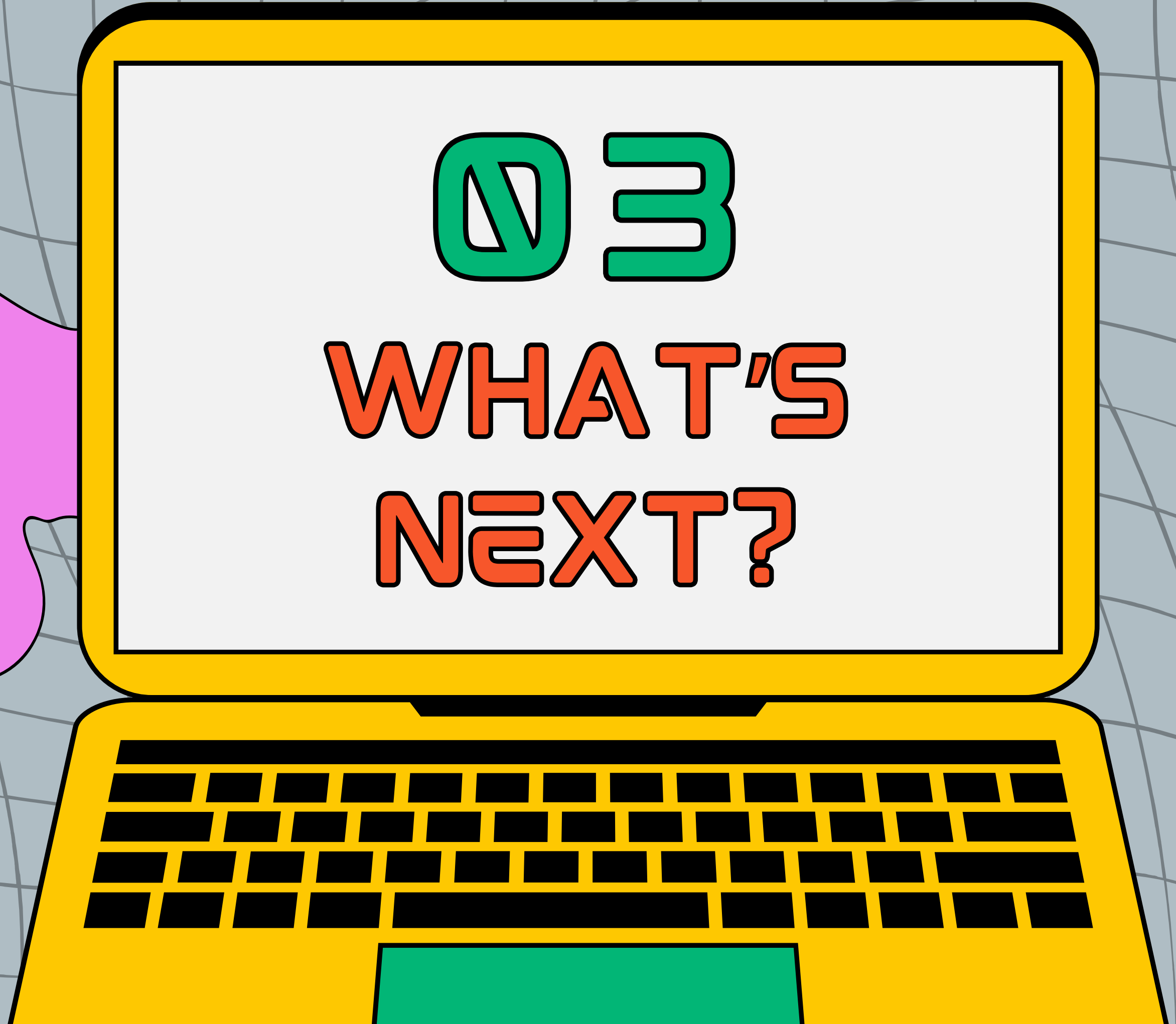
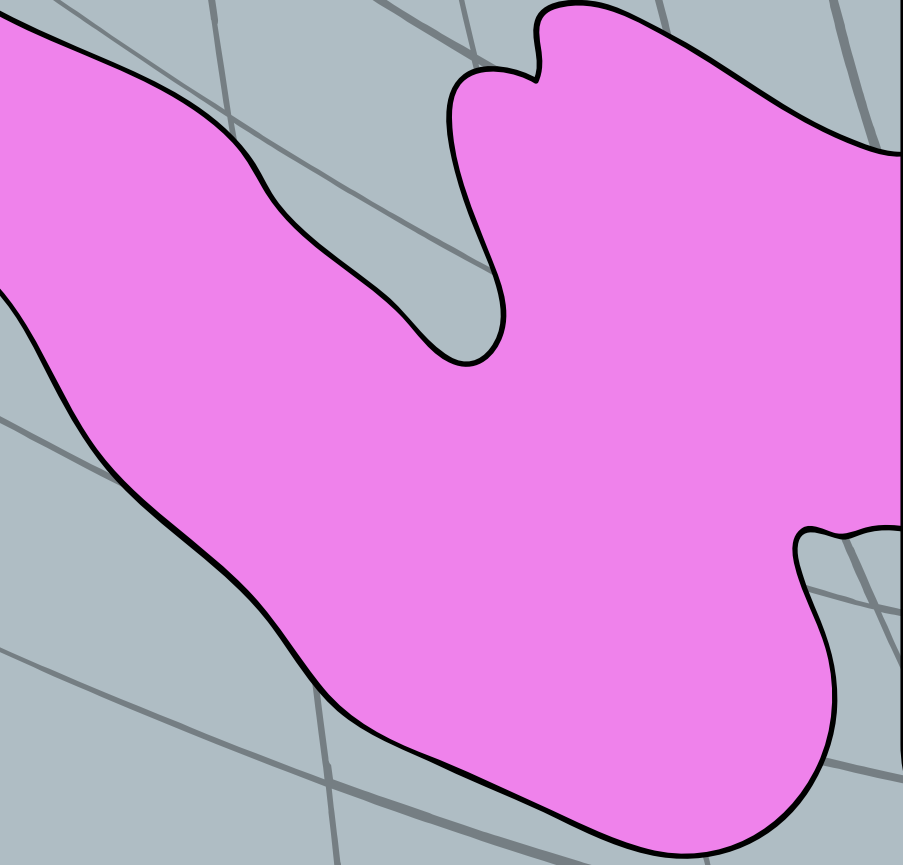
Student C (Not Eligible for Subsidy)
GHI > \$4,400 or PCI > \$1,100

Device Bundle Cost	\$639.80
Available Edusave Balance <i>(After setting aside for 2nd-tier misc fees)</i>	\$200.00 before deduction \$200.00 will be deducted
Cash Out-of-pocket	\$439.80



03

WHAT'S
NEXT?



WHAT'S NEXT?

01

The Singpass logo is displayed in a white rectangular box. The word "singpass" is written in a bold, lowercase, red sans-serif font. The letter "i" is black with a white dot.

**Parental
consent for
intent of PLD
via Singpass**

Intent to Purchase by 16 Jan (Tue)

02



Collection of Devices

Term 1 Week 8 - Term 2 Week 3

CONTACT US

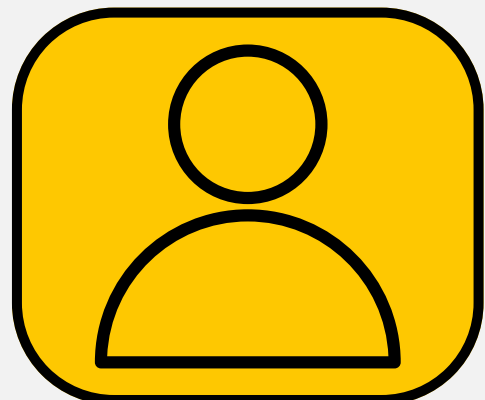


Slides and more information on School Website

<https://www.peihwasec.moe.edu.sg/learning-at-peihwa/infocomm-technology/>



Check for Edusave Balance (6260 0777)



Ms Shalini (HOD/ICT)

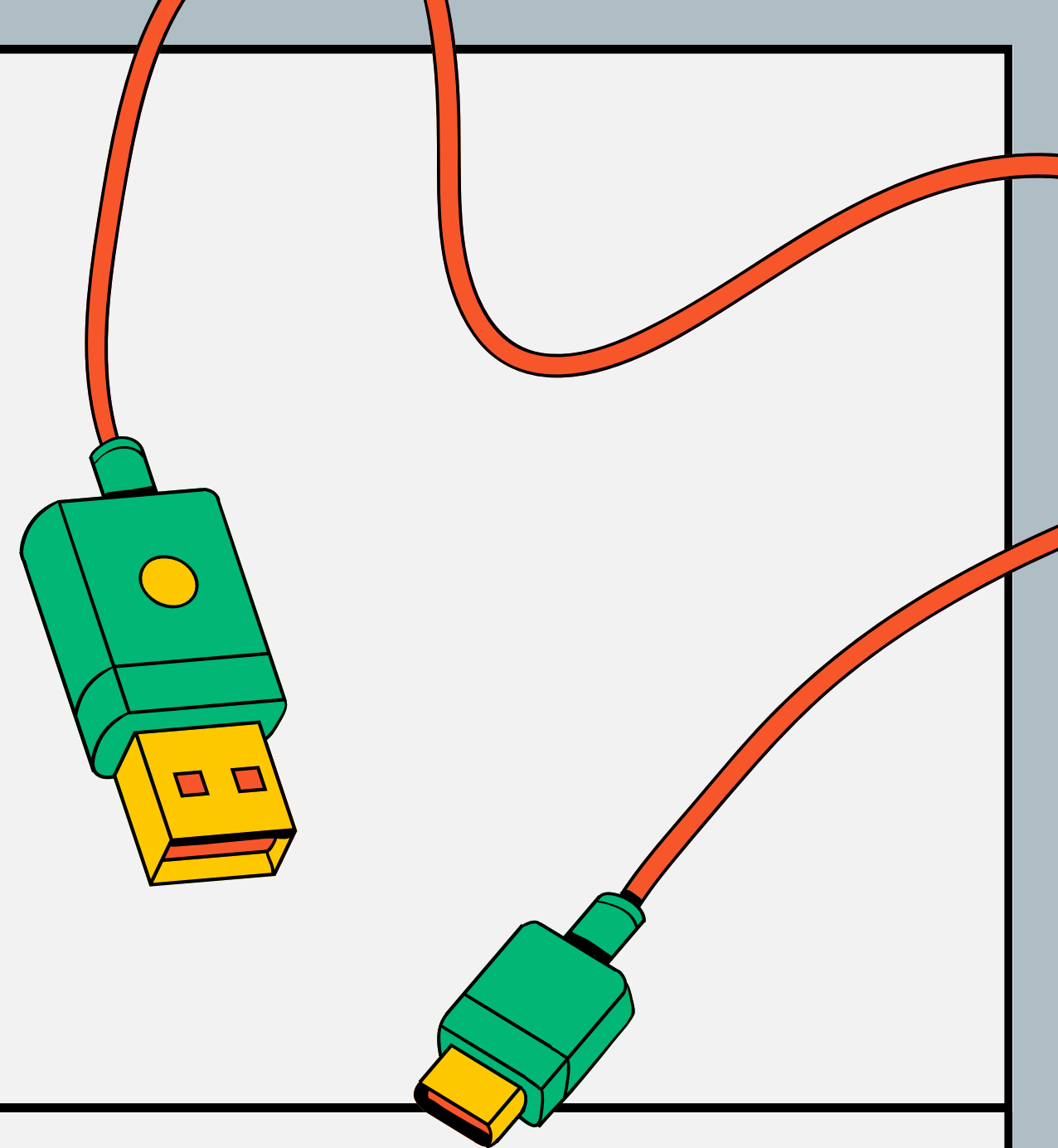
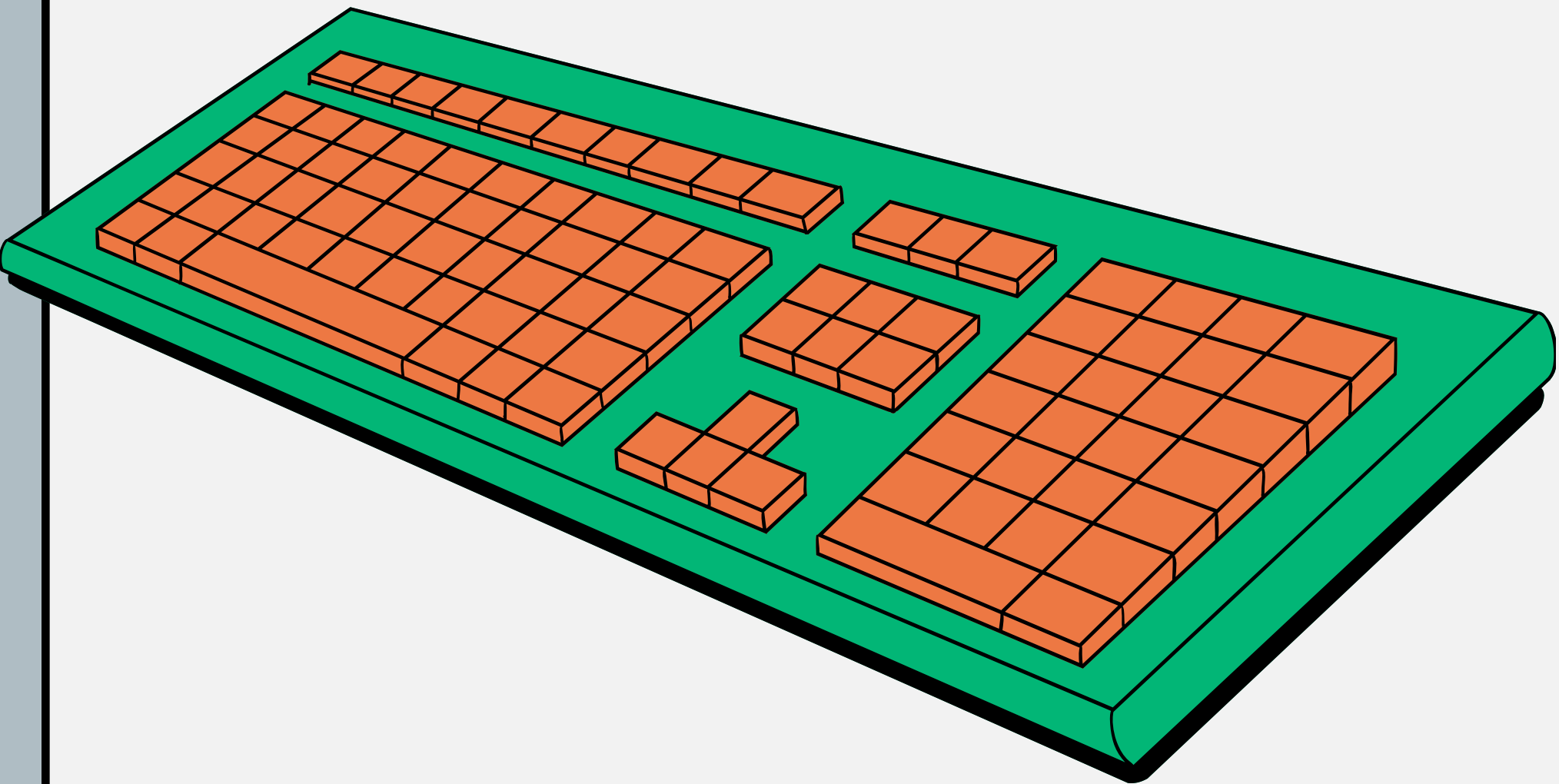
6500 9580 ext 210



Click on Parents Gateway

Email via Message on

PLD



THANK YOU!